

# LiquiSonic® Questionnaire

Continuous concentration monitoring with sonic velocity

company	_____	zip code, city	_____
industry	_____	state, country	_____
name	_____	phone	_____
department	_____	e-mail	_____
street	_____		
P.O. box	_____		

Please fill in all parameters marked with \*. Other desired parameters please fill in as far as possible.  
If there is no requirement in a particular parameter, please leave the corresponding field free.

Process/application	measuring component	carrier component	3rd component
liquid components			
name*	_____	_____	_____
formular	_____	_____	_____
CAS-number* for lab tests	_____	_____	_____
measuring range*	_____		_____
unit*	_____		_____
desired accuracy	_____		_____

Impurities: Yes No  
Please describe:

operating temperature\*: from \_\_\_\_\_ to \_\_\_\_\_ unit:  
 design temperature\*: from \_\_\_\_\_ to \_\_\_\_\_ unit:  
 ambient temperature\*: from \_\_\_\_\_ to \_\_\_\_\_ unit:  
 pressure: from \_\_\_\_\_ to \_\_\_\_\_ unit:

Do gas bubbles appear?\* Yes No

Do solids exist in the liquid?\* Yes No

Installation point of sensor:

Ex zone classification:  
(e.g. IECEx II 1/2 G Ex d IIC T1 – T6 Ga/Gb or FM Cl.I Div.1 Group A,B,C,D T6)

IP / Nema rating:  
installation point of controller:

electrical outputs: 4-20 mA  
fieldbus  
modbus

cable:  
cable length between sensor and controller:

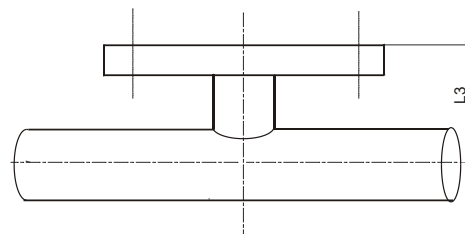
sensor material:

### pipe

size: DN in mm          ANSI in inch           
flange: DN in mm          ANSI in inch         

pigging: Yes No  
heat tracing: Yes No

Please define L3:  
(L3 = top edge to middle of pipe)



### vessel / tank

heating coat: Yes No  
height / diameter: Yes No  
agitator: Yes No

measuring task (detailed, e.g. with drawing):



**SensoTech GmbH**  
Steinfeldstraße 1  
39179 Magdeburg-Barleben  
Deutschland  
+49 39203 514 100  
info@sensotech.com  
www.sensotech.com

**SensoTech Inc.**  
69 Montgomery Street, Unit 13218  
Jersey City, NJ 07303  
USA  
+1 973 832 4575  
sales-usa@sensotech.com  
www.sensotech.com

**SensoTech (Shanghai) Co., Ltd.**  
Room 609, Bldg.1, No.778, Jingji Road.  
Pilot Free Trade Zone, 201206 Shanghai  
China  
+86 21 6485 5861  
sales-china@sensotech.com  
www.sensotechchina.com

